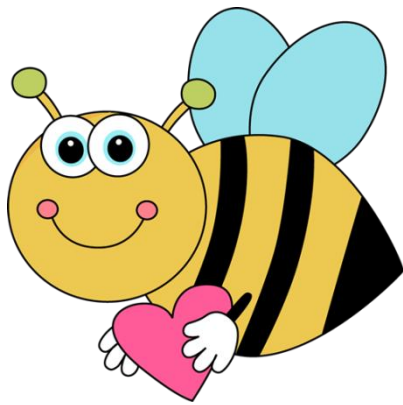


JOIN US AT



PTA
everychild.onevoice.

The Hearts of Bollman Bridge!



Party

**Face Painting,
Games, Snacks,
DJ, &
Professional
Photos (for a \$5 fee).**

February 10

6:30 -8:30 PM

In the cafeteria

Tickets \$10 per family.

*Cost is purely to help subsidized the
cost of the party. This is not a
fundraiser*

Tickets are sold in advance
ONLY.

NO tickets will be sold at
the door



See the attached
form to purchase
your tickets now!

TICKET ORDER FORM



HEARTS OF BOLLMAN BRIDGE

Checks & Money Orders ONLY. Payable to BBES PTA

Please return your form and payment by January 31

\$10 per family

\$15 per family plus 1 photo
from professional photographer

TICKETS WILL NOT BE SOLD AT THE DOOR.

Return by January 31, to your homeroom teacher.

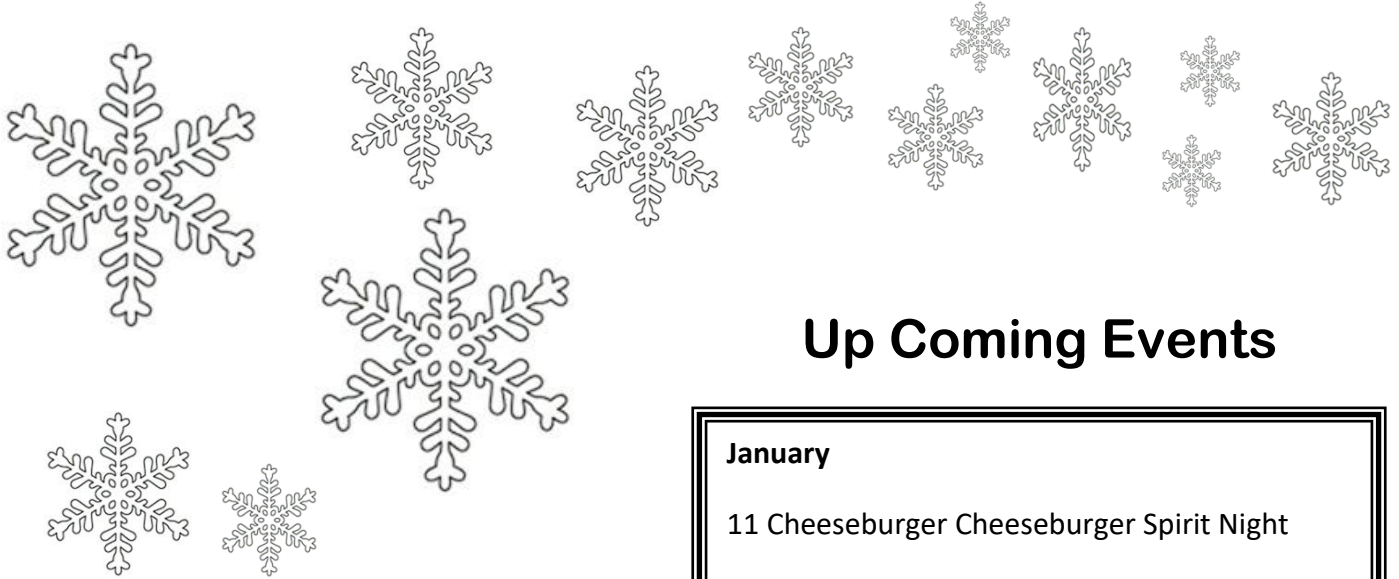
Family Name _____

Number of Children: _____ Number of Adults: _____

\$10 Family Ticket _____ \$15 Family plus Photo Ticket _____

Email: _____

We will email you your ticket!



Up Coming Events

KidzArt

Inexpensive, short sessions continue through the school year. Be on the lookout for their fliers!

Session 3 Jan. 12 - Feb. 23

Session 4 March 2 - April 20

Session 5 April 27 - June 1

Join us for our next meeting in February! Most meetings last 60 minutes or less.

You don't have to be a paid member to attend.

January

- 11 Cheeseburger Cheeseburger Spirit Night
- 15 School Closed
- 18 Coffee With Admin. 2:00 – 3:00 PM
- 26 School Closes 3 Hours Early & Chuckie Cheese Spirit Night 3 PM to 9 PM

February

- 1 Uno's Ellicott City Spirit Night 12 - Close

10 Hearts of Bollman Bridge Party

- 12 Chick-Fil-A Hopkins Rd, Spirit Night ALL DAY!
- 13 PTA Meeting 6:30 PM
- 16 School Closed
- 19 School Closed (possible snow makeup date)

March

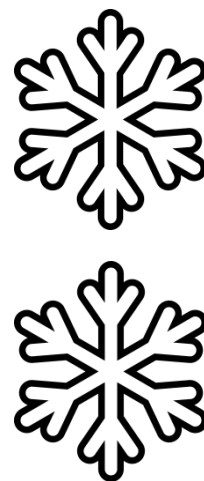
- 2 Coffee With Admin. 9:00 -10:00 AM
- 5 Tino's Spirit Night , 11 AM – 10 PM
- 13 PTA Meeting 6:30 PM
- 16 Possible Movie Night
- 19 Panera Bread Spirit Night 6 – 9 PM
- 30 School Closed

Have You Ever Attended a Coffee With Admin.?

If you haven't, think about joining the school administration at the next one!

It's a small setting, where you can ask individual questions and have your voice heard about multiple topics concerning BBES including testing, school policies, and more.

The next Coffee is Thursday, January 18, 2:00 to 3:00 PM



Where Does All Our Money Go?

BBES families have dug deep and given greatly to the PTA this school year. We cannot begin to tell you how appreciative we are of this. We wanted to give you an idea of what **YOU** have helped us do!

Free Family Events:

The Back to School Picnic, Multicultural Night, & Trunk or Treat was all free because of **your generosity!** And **your donations** both financial and volunteers means we can add more to this list.

The Students:

Your donations this year has allowed us to stock the Beaver Cart for the entire year as well as helping Mrs. Gillis and the PBIS team fund Beaver Bashes and monthly prizes. **You made** it possible for us to offer low cost after school activities as well as aiding the Media Center in bringing a children's author to the school (later this school year).

The Staff:

Thanks to you, we were able to provide each grade and team with funds to help them purchase supplies for their classrooms. **Your generosity** every month with baked goods allows us to provide the staff with the coffee cart, that they love so much! In addition we were able to help fund projects like the first grade Author's Tea, because of **you**.

The School:

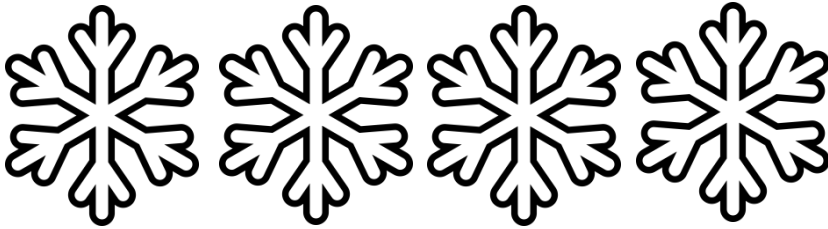
You helped us help the Green Team spruce up the courtyard garden and outdoor classroom. The donations **you gave** allowed PTA to largely fund The Wellness Committee who brings us Wellness Day, Football Combine, and BBES Walks (all free to the students!)

In short YOU created a thriving community at BBES!

PTA Winter Newsletter

PTA[®]

everychild.one voice.[®]



CHESS CLUB

We want to take a moment to thank the parents that helped to make Chess Club a reality this fall! Shawn Bediko, Joe & Adri Westlake, Neil Fenwick, Elsa Spezio, and Tom Kujawa.

Thanks to them we were able to bring the club to over 40 students at BBES! Many of whom were new to the game and quickly became great players!

We are hoping to offer the club again in the spring.

THANK YOU!

Mrs. Inskeep & the staff would like to thank everyone that provided them with a wonderful & yummy soup lunch during conferences!

The Staff Appreciation Team would also like to thank **everyone** that provided food, financial donations, or volunteered their time to make this a great event for our staff.

Hearts of Bollman Bridge Party

Plans are underway for a fun filled evening of games, snacks, professional photos, crafts, dancing and more!

February 10 from 6:30 to 8:30

Jen Macomber is heading up this team and looking for volunteers to help with set up and clean up, as well as a few adults to be in charge of games.

If you can lend your time please contact us at BollmanBridgePTA@gmail.com

We are also looking for donations of snacks for the party

Check out the Sign Up Genius to see what we need!
www.signupgenius.com/go/10c0c4caaae2aa3f94-hearts

SEE THE BACK FOR MORE!

